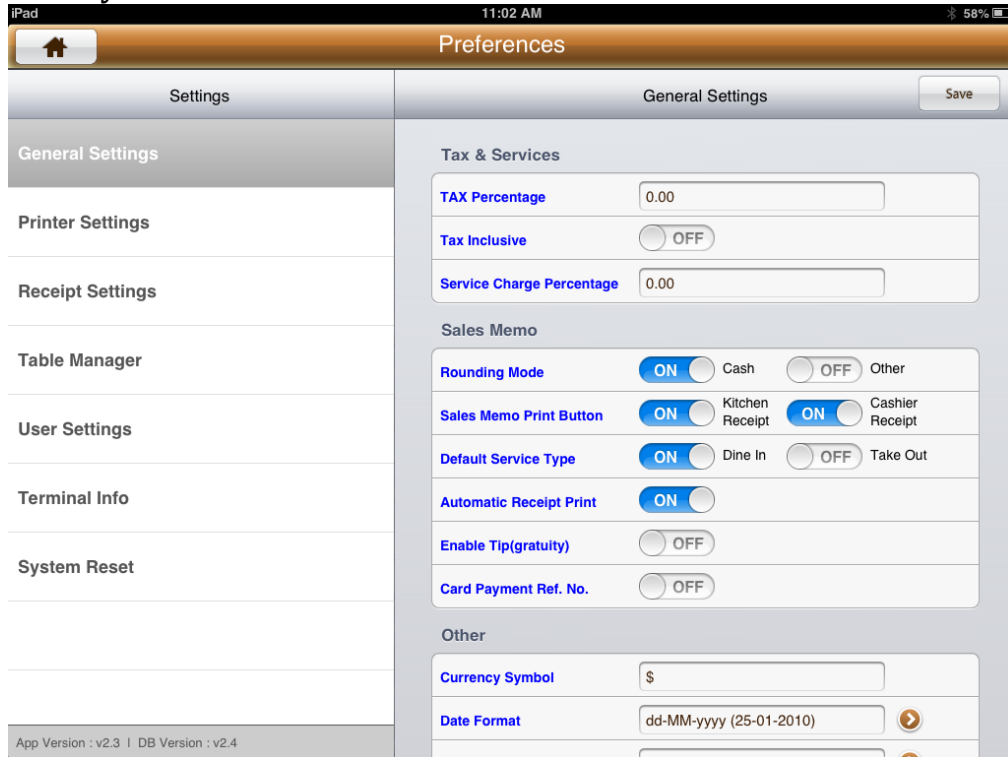


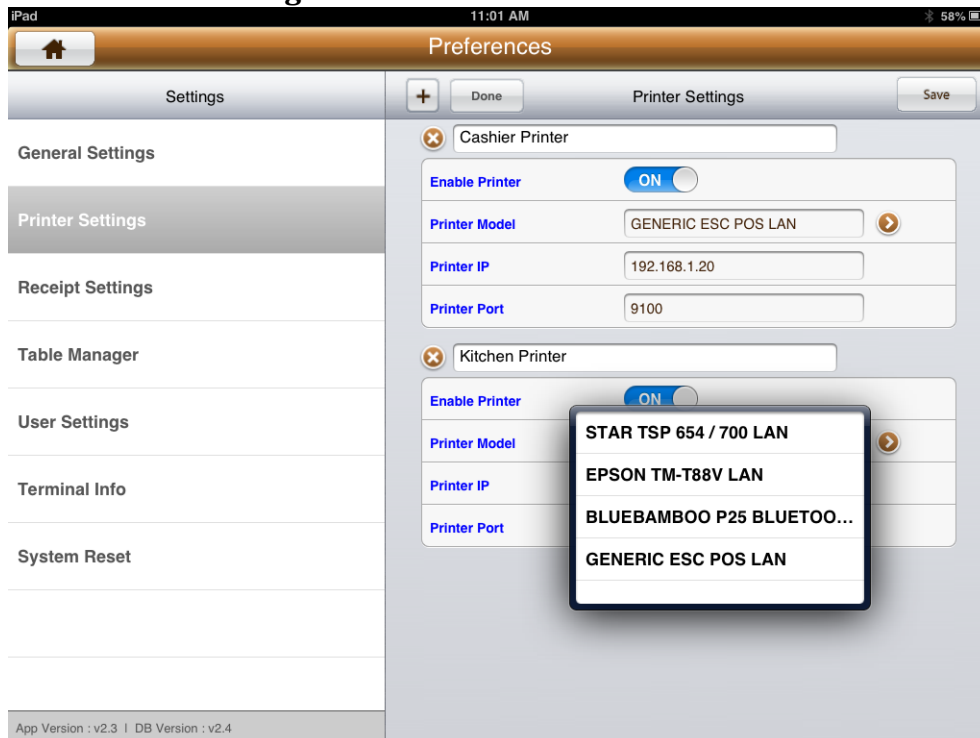
## To Setup Kitchen Printer for the Octopus™ Food POS

Make sure that the outlet is wifi - enabled and that you have the Router settings.

### Goto System Administration ->



### Goto Printer Settings



There should already be two printers set as default there.  
Select the desired model as well as the IP address and the printer port – normally it is 9100.



If you want to setup a new printer, click on the '+' sign at the top of the bar and enter in the details accordingly.